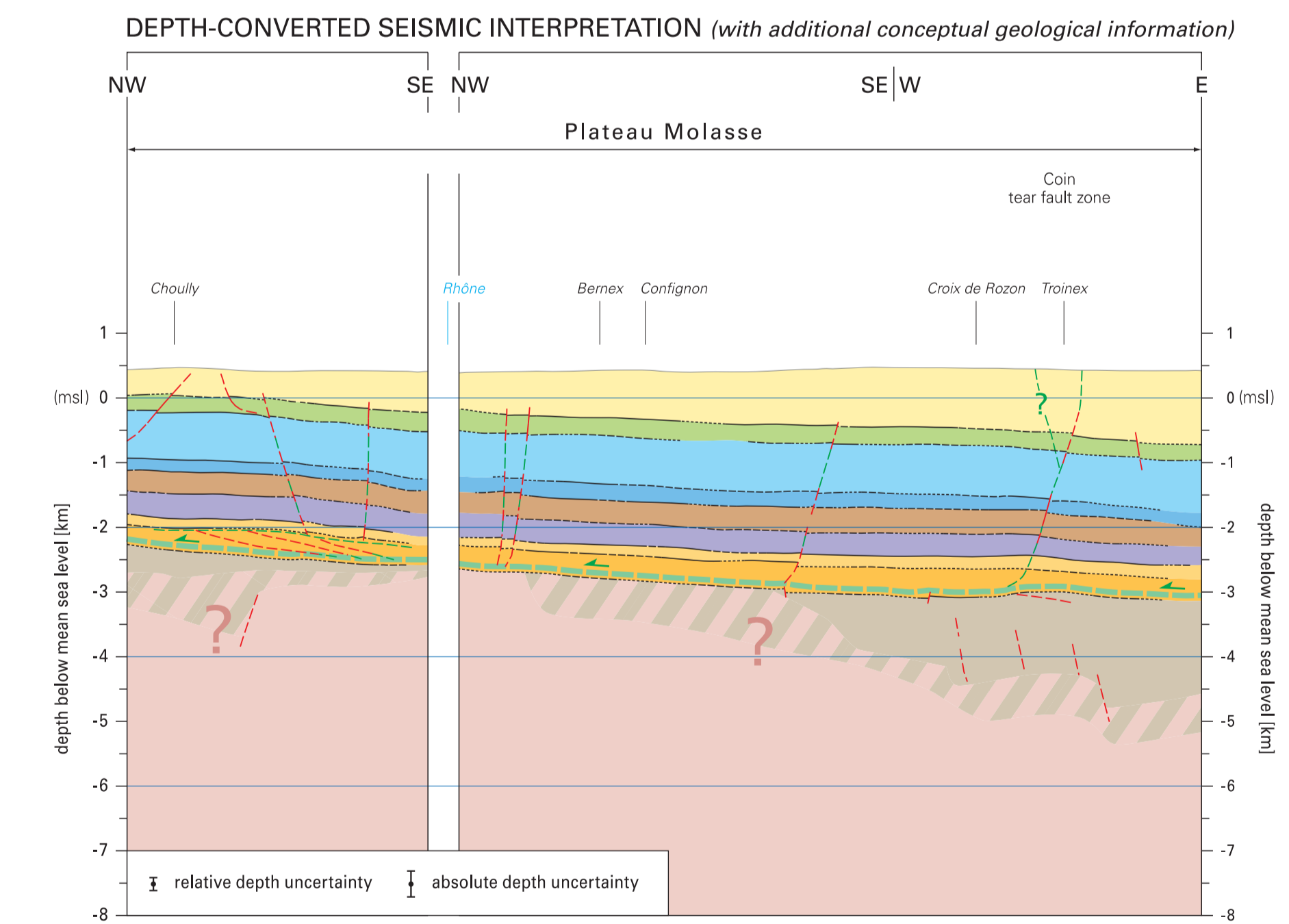
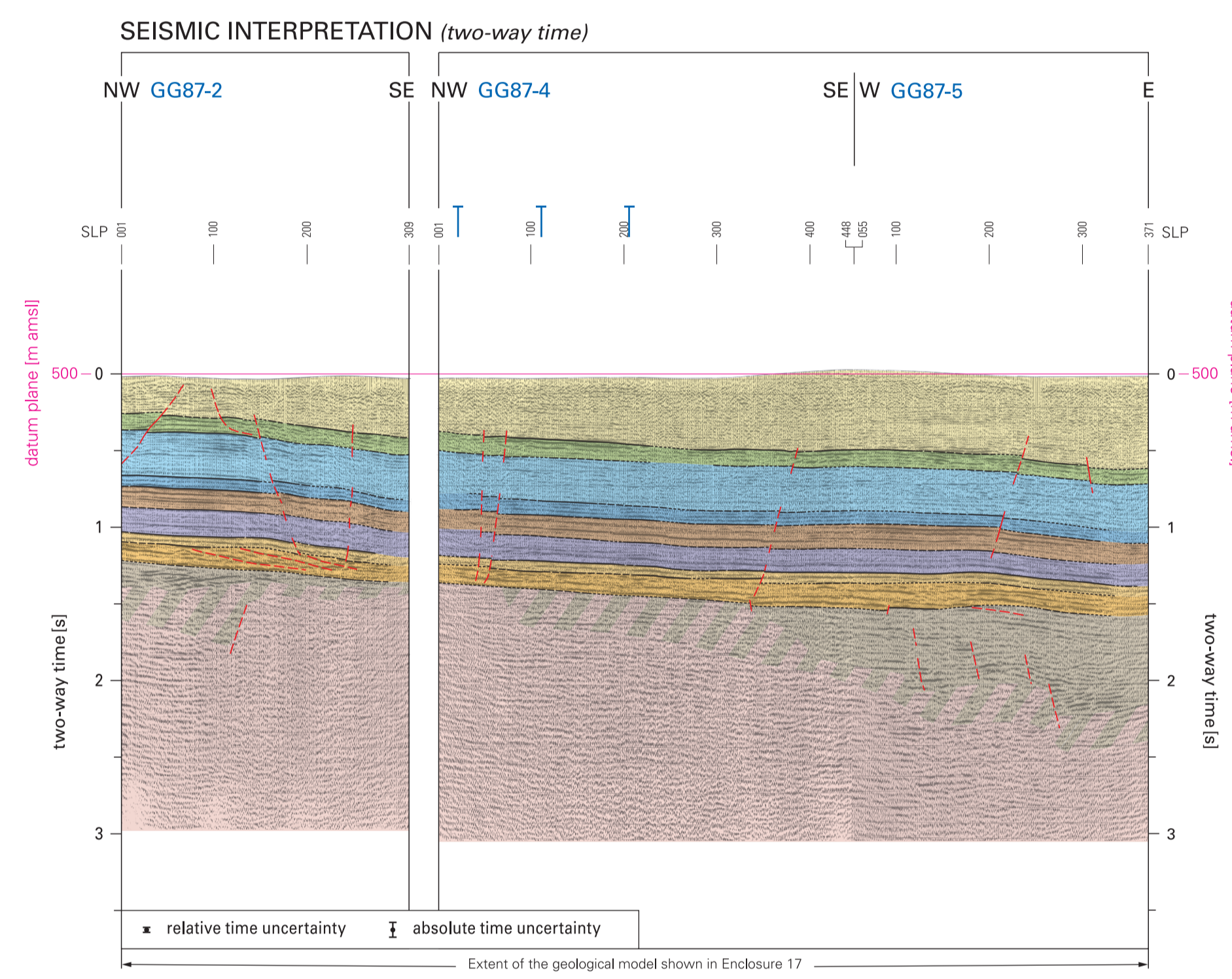
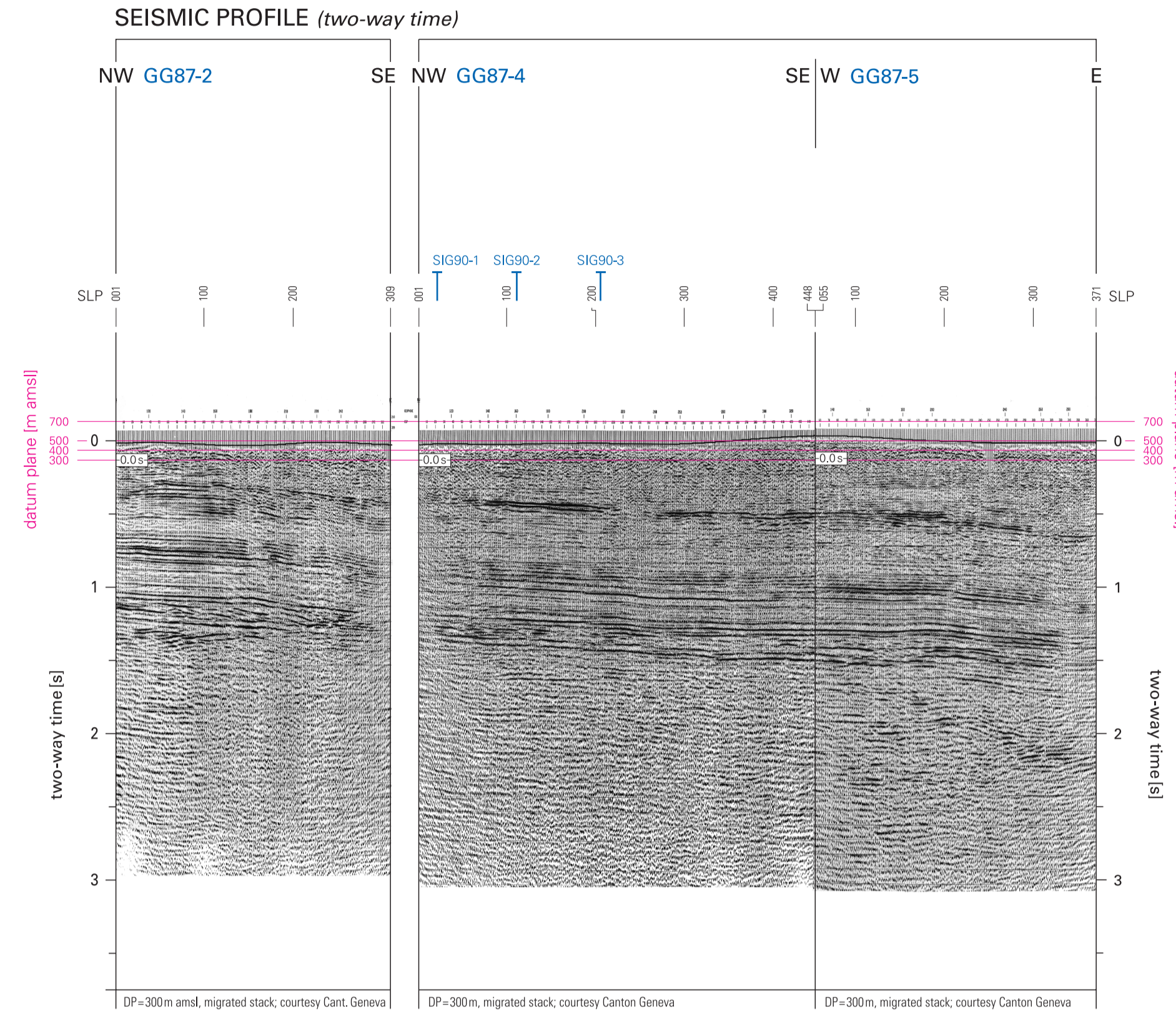


Seismic transect 01: GENÈVE (GE)
Seismic transect 02: ORBE (VD)–MORGES (VD)
1:80 000

Authors of the enclosure: Anna Sommaruga and Urs Eichenberger (Institute of Geophysics, University of Lausanne)

01: GENÈVE (GE)

Horizontal scale 1:80 000



02: ORBE (VD)–MORGES (VD)

Horizontal scale 1:80 000

